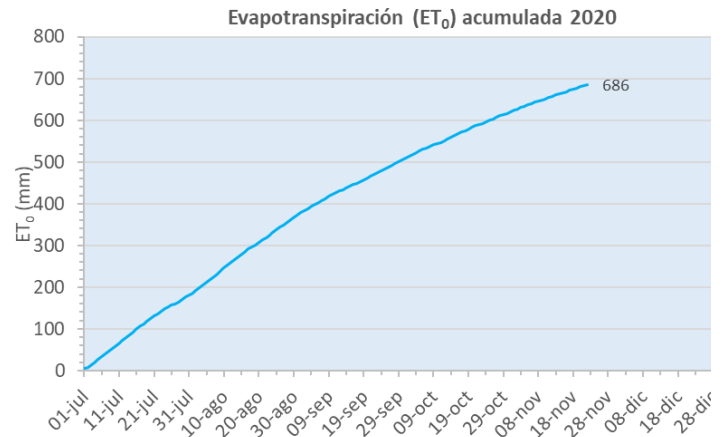
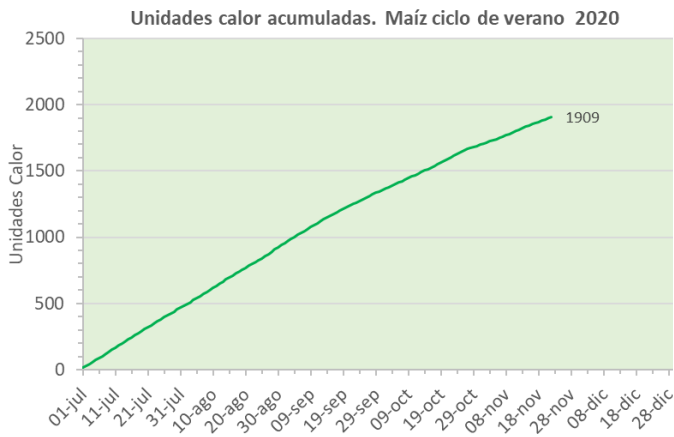


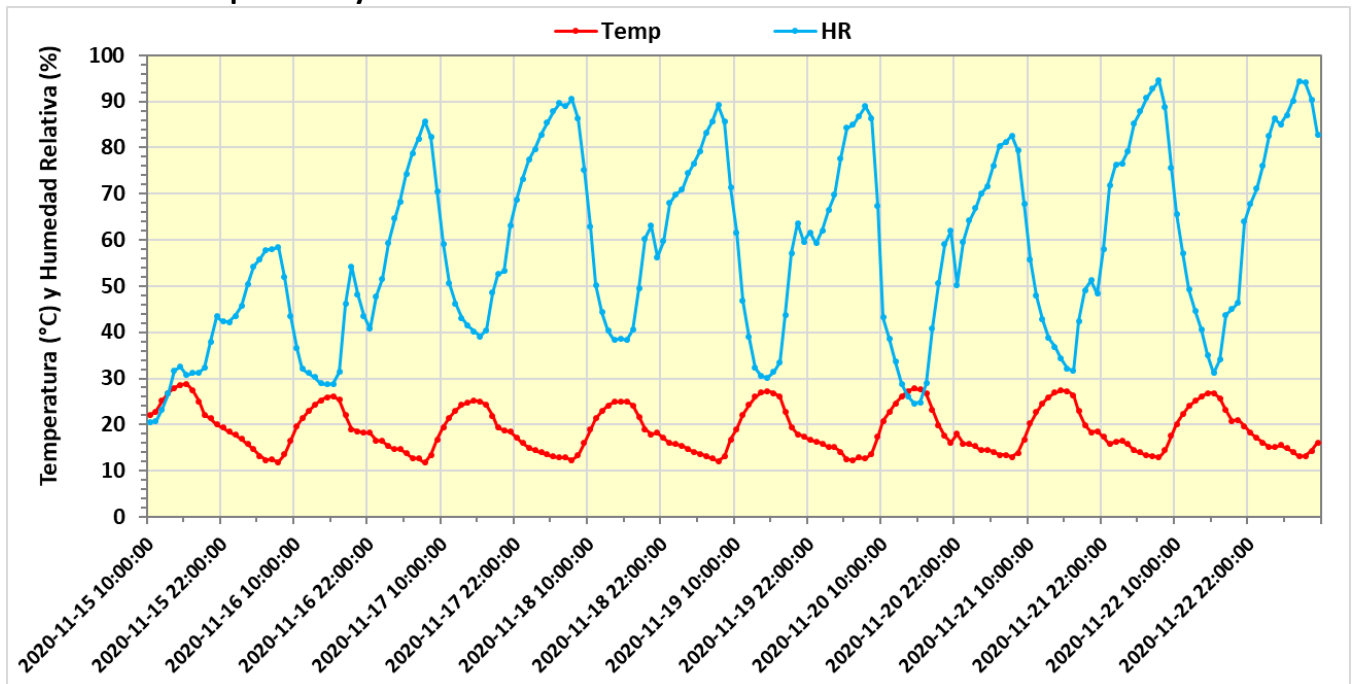
## Reporte de clima del 16 al 22 Nov, 2020

### Observaciones por hora

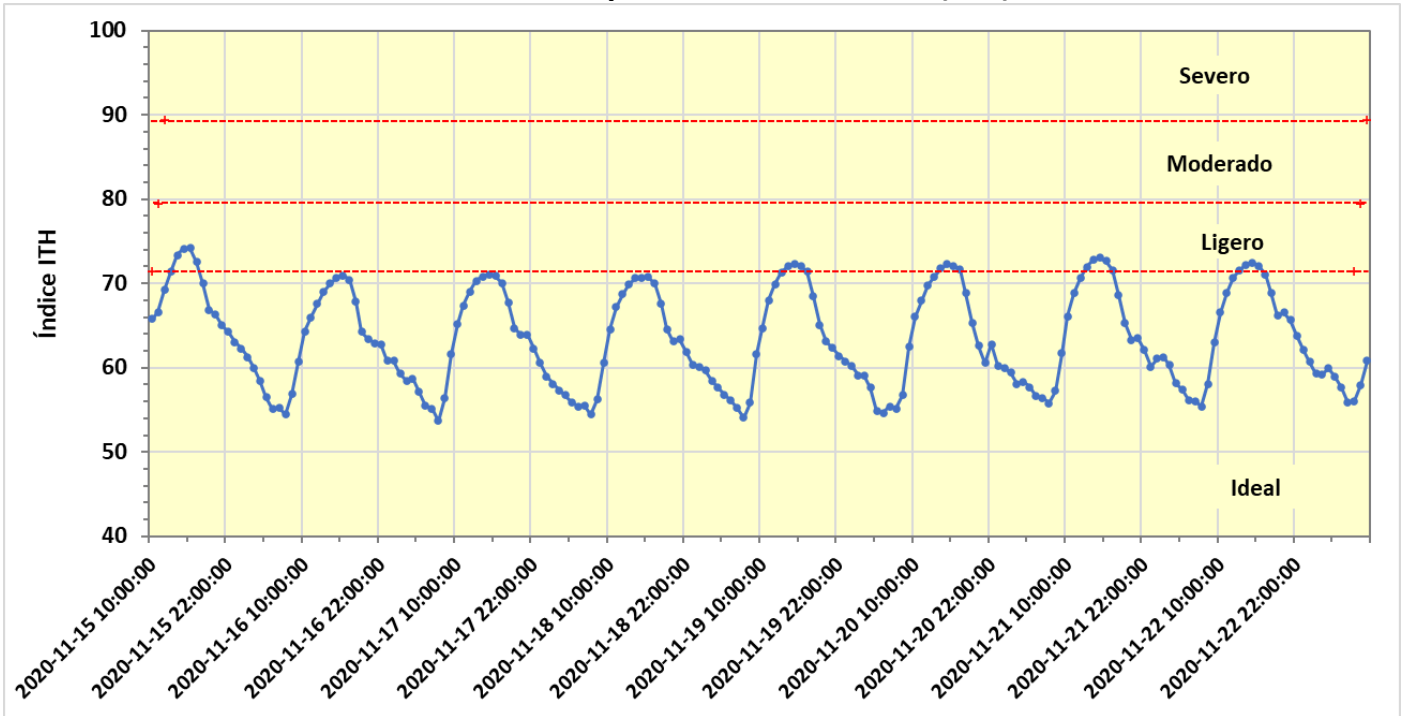
Día	Fecha	Temp ambiente [°C]			Unidades calor Maíz (10 - 30)		Radiación Solar [W/m2]	Hum relativa [%]			Precipitación [mm]		Vel del viento [m/s]		Vel viento (ráfagas max)		Evapotransp. - ET <sub>0</sub> [mm]	
		Media	Max	Min	Diario	Acum	Media	Media	Max	Min	Diaria	Acum	Media	Max	m/s	km/hr	Diaria	Acum
L	16-nov	18.7	26.3	11.4	8.8	1852	168	43.7	61.3	27.9	0.0	149.6	1.0	2.4	5.7	21	2.8	669
M	17-nov	18.4	25.6	10.9	8.2	1860	170	59.9	90.0	37.5	0.0	149.6	1.5	3.0	5.8	21	2.9	672
M	18-nov	18.1	25.5	12.0	8.8	1869	162	64.8	91.8	36.3	0.0	149.6	1.2	2.5	4.8	17	2.7	675
J	19-nov	18.8	27.8	11.8	9.8	1879	169	59.8	90.4	29.2	0.0	149.6	1.0	2.6	4.7	17	2.8	677
V	20-nov	19.0	28.4	11.2	9.8	1889	168	56.1	89.6	23.1	0.0	149.6	0.9	2.8	4.7	17	2.7	680
S	21-nov	19.1	28.0	12.8	10.4	1899	167	57.6	83.3	30.4	0.0	149.6	1.2	2.4	4.6	17	2.9	683
D	22-nov	19.4	27.3	12.4	9.8	1909	165	64.3	95.5	29.0	0.0	149.6	1.5	3.2	6.0	22	3.0	686



### Promedios de Temperatura y Humedad Relativa cada hora



### Índice de Temperatura – Humedad (ITH)



NOTA: Índice calculado con observaciones cada hora (puntos en la gráfica)