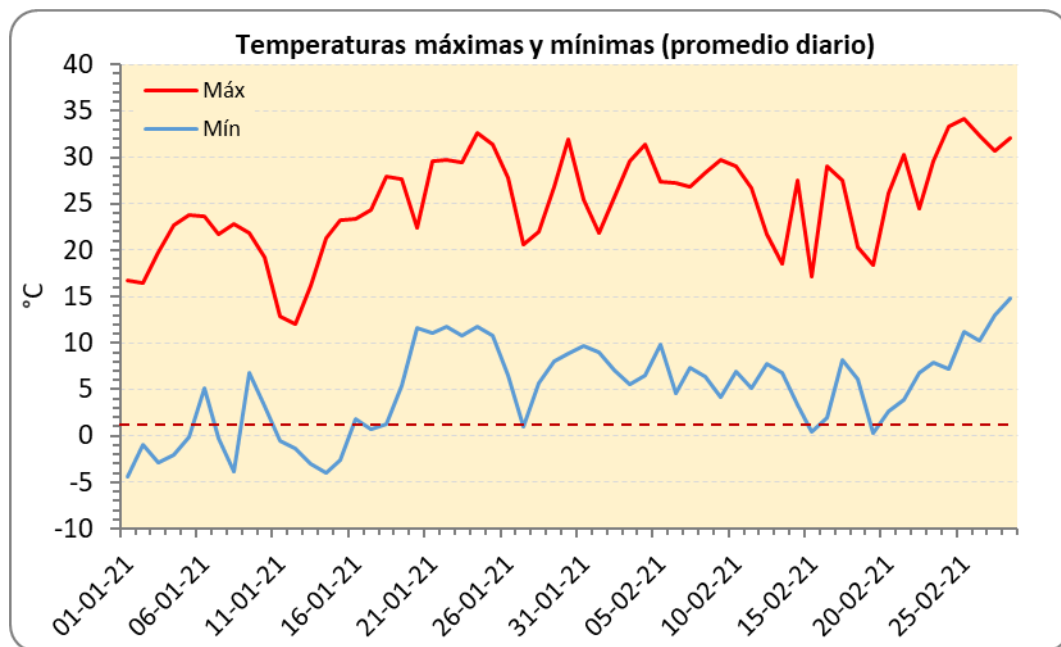
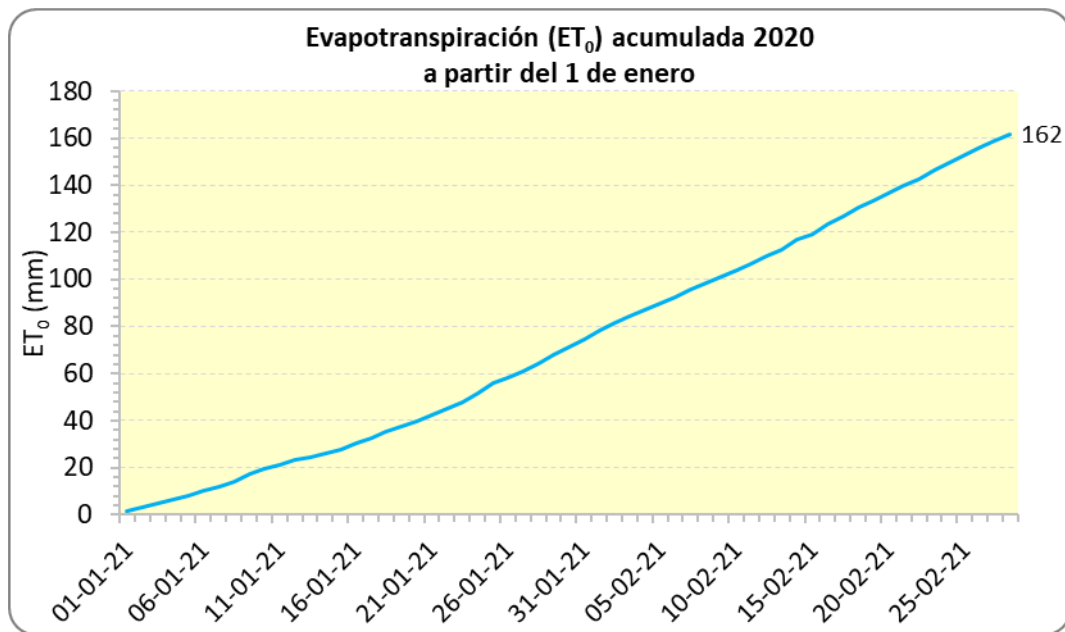
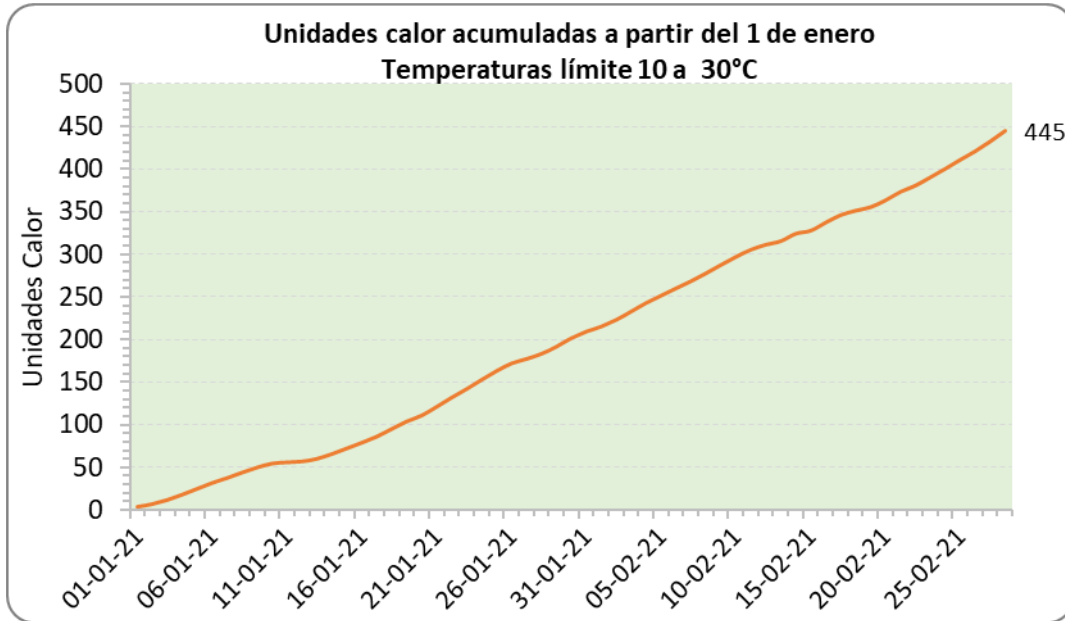


Reporte de clima del 22 al 28 de Feb 2021

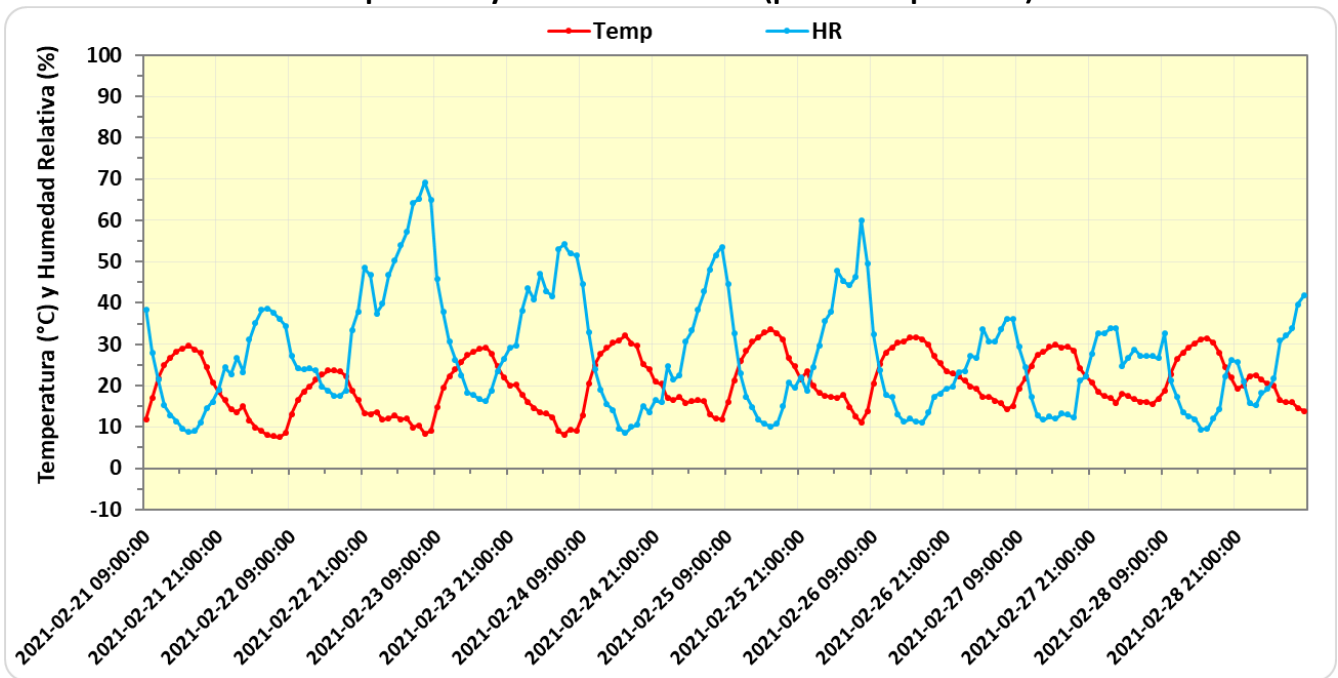
Observaciones por día

Día	Fecha	Temp ambiente [°C]			Unidades calor [Temp 10 - 30]		Horas Frío [≤ 7.0° C]		Radiación Solar [W/m ²]	Hum relativa [%]			Precipitación [mm]		Vel del viento [m/s]		Vel viento (ráfagas max)		Evapotransp. ET ₀ [mm]	
		Media	Max	Min	Diario	Acum	Diario	Acum	Media	Media	Max	Min	Diaria	Acum	Media	Max	m/s	km/hr	Diaria	Acum
Lun.	22-02-21	15.5	24.5	6.7	7.3	381	0	500	225	30.1	58.8	14.5	0.0	8.2	0.5	2.2	4.9	18	2.8	143
Mar.	23-02-21	18.8	29.6	7.9	9.8	391	0	500	216	37.9	71.6	15.1	0.0	8.2	0.9	3.1	5.6	20	3.5	146
Mié.	24-02-21	20.1	33.4	7.2	10.0	401	0	500	225	29.2	59.3	5.6	0.0	8.2	0.4	1.4	2.7	10	3.1	149
Jue.	25-02-21	22.3	34.2	11.2	10.6	411	0	500	212	26.6	57.5	9.0	0.0	8.2	0.6	1.9	3.8	14	3.4	153
Vie.	26-02-21	22.9	32.4	10.2	10.1	421	0	500	212	27.4	66.7	9.4	0.0	8.2	0.7	2.3	5.0	18	3.5	156
Sáb.	27-02-21	22.0	30.6	12.9	11.5	433	0	500	150	23.9	44.4	10.5	0.0	8.2	0.4	1.6	3.1	11	2.5	159
Dom.	28-02-21	22.3	32.1	14.8	12.4	445	0	500	195	21.7	42.3	8.0	0.0	8.2	0.5	2.9	4.9	18	3.1	162

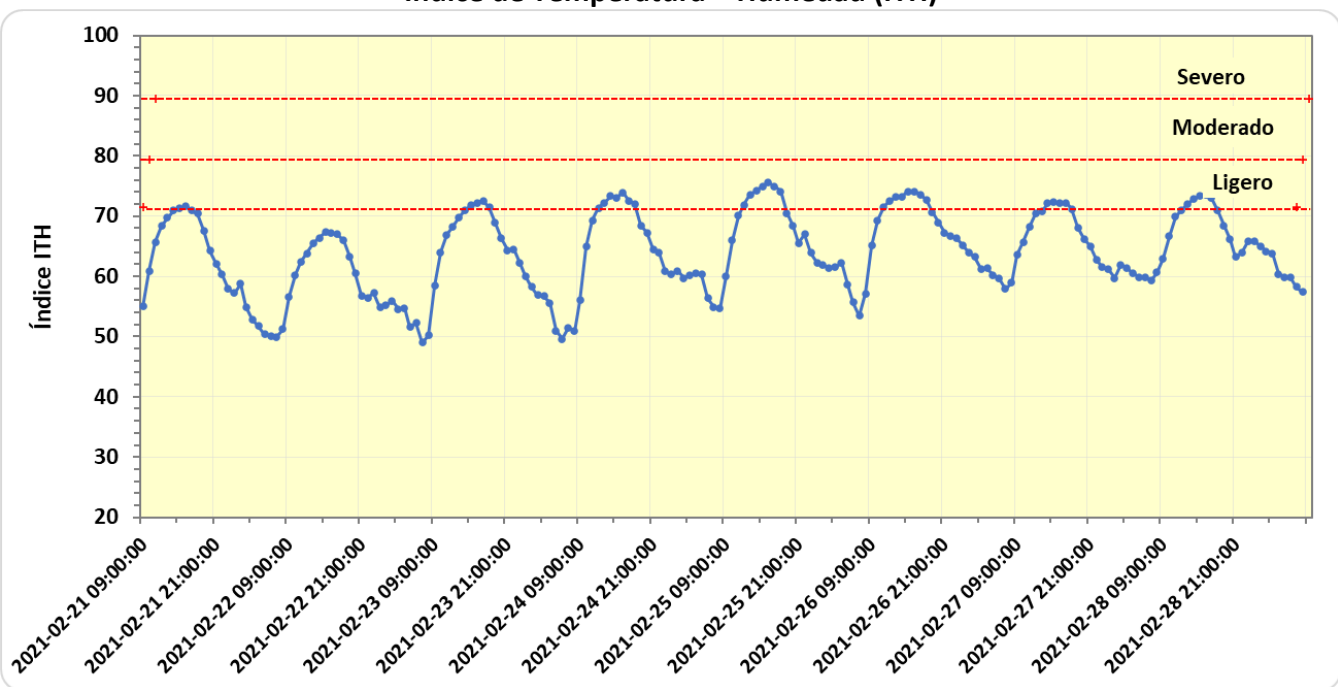




Temperatura y Humedad Relativa (promedio por hora)



Índice de Temperatura – Humedad (ITH)



NOTA: Índice calculado con observaciones cada hora (puntos en la gráfica)